

Rechargeable smart lamp

(for installation under the basket)

Product number YB-140

safety precautions

**Danger**

■ Do not disassemble or modify the product.

⊘ If a malfunction occurs or a metal object gets inside the product, it may cause burns or a fire.  
\*Excluding disassembly when disposing of the product.

■ Do not throw the battery into fire or heat it.

- Do not charge, use, or leave it at high temperatures.
- Do not heat it in a microwave or oven.

⊘ This may cause heat generation, fire, or explosion.

**Warning**

■ Do not immerse in water.

⊘ This may cause overheating or explosion.

■ Use the included USB charging cable and charge in the specified manner.

⚠ Failure to do so may result in overheating, fire, or explosion.

**Caution**

■ Do not subject to strong impact or throw.

⊘ This may cause heat generation, fire, or explosion.

⚠ Do not look directly at the light source.

⊘ It can cause eye damage.

**Danger**

■ Immediately stop using the product if there is an abnormality or malfunction.

- When smoke, an unusual smell, or an unusual sound is emitted.
- When water or a foreign object gets inside the product.
- When the product or USB charging cable is damaged.

⚠ If used as is, it may cause fire or electric shock.

Specification

Battery used	Lithium-ion battery 3.7V 500mAh		Light source	White LED	
Battery life	Continuous lighting: 2 hours	(20°C)	Center illuminance	15 lx (10m ahead)	
Charging time	3 hours		Weight	60 g	Only the main unit removed from the holder
Waterproof rating	IPX 5		External dimensions	33 x 80 x 44 (mm)	

Handling Precautions

- The internal LED cannot be replaced.
- When using for the first time or after not using for a long time, be sure to charge before use.
- Even if you will not be using for a long time, charge once a year.
- To remove dirt, wipe with a cloth soaked in water or a moderately diluted dishwashing detergent (neutral).
- Do not operate the switch while riding.
- For safe riding, check that the attachment is not loose or rattles before riding.
- For safe riding, check that the lights are on before riding.
- \*Riding at night without lights is against the law.
- When removing the unit from your bicycle and carrying it, press and hold the switch to turn the power OFF.
- \*The light may turn on automatically in dark places such as in a bag, which may drain the battery.

Names and uses of each part

\*Please leave installation to your bicycle to your dealer.

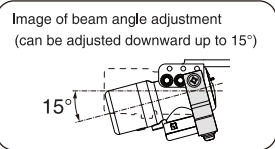
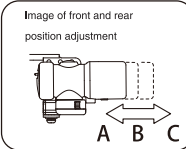
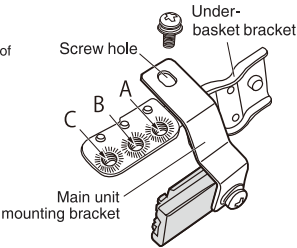
Adjusting the unit's mounting position

■ Determine the front and rear positions of the main body, align the screw holes of the main unit mounting bracket with screw holes A, B, or C of the under-basket bracket, and then fasten them with the screws.

● Tightening torque (1.8 to 2.5) N m ( 18 to 25 kgf cm)

\* Be sure to observe the tightening torque value.  
The screws may loosen while driving, causing the beam angle to change.

\* Adjust the beam angle so that it illuminates the road surface.  
(approximately 5 to 10 m ahead)

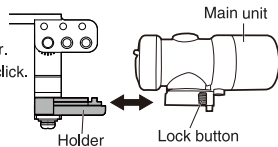


At the time of purchase, it is attached to screw hole A. Even if you use it with screw hole A, you must adjust the beam angle.

How to attach and detach the device

Pull out the device pressing the lock button to remove it from the holder.

\*When attaching the device to the holder, insert it firmly until you hear a click.



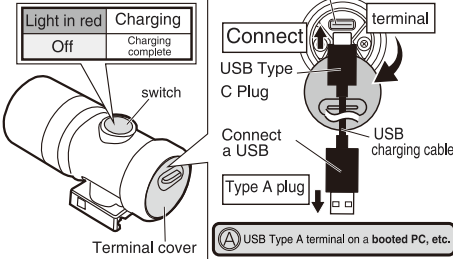
How to charge

\*Please remove the main unit from the holder before charging.

- ① Open the terminal cover.
  - ② Connect the USB charging cable to two points A and B to start charging.
- \* The switch will light up red while charging and will turn off when charging is complete.

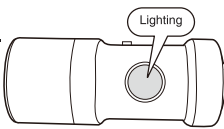
③ After charging is complete, unplug the USB charging cable and firmly press the terminal cover back into place to close it.

\* If the terminal cover is not pressed firmly in, waterproofing may not be ensured.



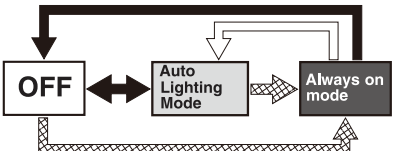
○ When the battery level is low, the switch will act as an indicator and light up red. If it lights up red, please charge it as soon as possible.

\* Even if the switch (indicator) lights up red, the light source will remain on for about 30 minutes, but after that the indicator and light source will flash and then turn off.  
(Please do not ride at night with the light source flashing.  
This is against the law.)



How to operate the switch:

Press the switch to change modes.



\*The light source will flash slowly three times before switching to automatic lighting mode.

Automatic lighting mode

The light source will automatically light up when driving in dark places, and will flash for approximately 30 seconds if you stop driving for approximately 5 seconds, such as when waiting at a traffic light.

Always on mode

The light source will remain on.  
\*In always on mode if you stop driving for approximately 10 seconds, the brightness will drop to approximately 60% to save power.

Switch to automatic lighting mode, cover the light sensor with your hand, and gently shake the unit to check if it is on.

\*If it does not light up, please charge it.



Recycling of battery packs when disposing of products

**Danger**

■ Do not reuse the removed battery pack.

■ Do not do the following to the removed battery pack.

- Do not heat and throw it into fire or water.
- Do not disassemble or modify it.
- Do not drive nails into it or subject it to shocks.
- Do not allow metal or other objects to come into contact with the connector.
- Do not carry or store it together with metal objects.
- Do not leave it in direct sunlight or in a high-temperature location.

⊘ This may cause heat generation, fire, or explosion.

⚠ If battery fluid comes into contact with your eyes or skin, immediately rinse with plenty of water and seek medical attention.

⚠ Failure to do so may result in loss of eyesight or injury.

**caveat**

■ If the battery is leaking or has an unusual odor, keep it away from open flames.

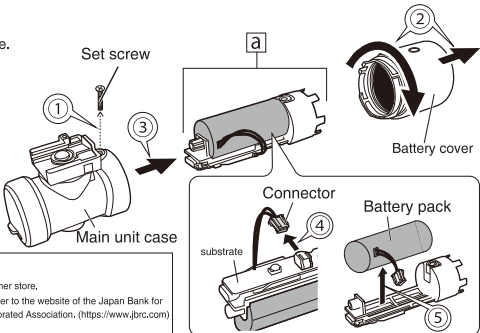
⚠ Failure to do so may result in the leaking electrolyte catching fire, causing the battery to explode or catch fire.

- \* Before removing the battery pack, make sure that the LED does not light up even when the switch is turned on.
- \* Use a commercially available Phillips head screwdriver to remove the set screws.
- \* Do not disassemble the product unless you are disposing of it. The following instructions are for removing the built-in battery pack when disposing of the product, and are not instructions for repair. Once disassembled, it cannot be repaired.

<How to remove the battery pack>

- ① Remove the set screw on the main body case.
- ② Remove the battery cover.
- \*Turn it in the direction of the arrow before removing it.
- ③ Pull out [a] from the main body case.
- ④ Pull out the connector on the board
- ⑤ Remove the battery pack.

\*It is secured with double-sided tape, so please pull it out with strong force.



Where to send used batteries

**Li-ion 20**  
Using a lithium-ion battery

\*Go to your nearest recycling partner store,  
\*For more information, please refer to the website of the Japan Bank for Recycling (JBRC) General Incorporated Association. (<https://www.jbrc.com>)